

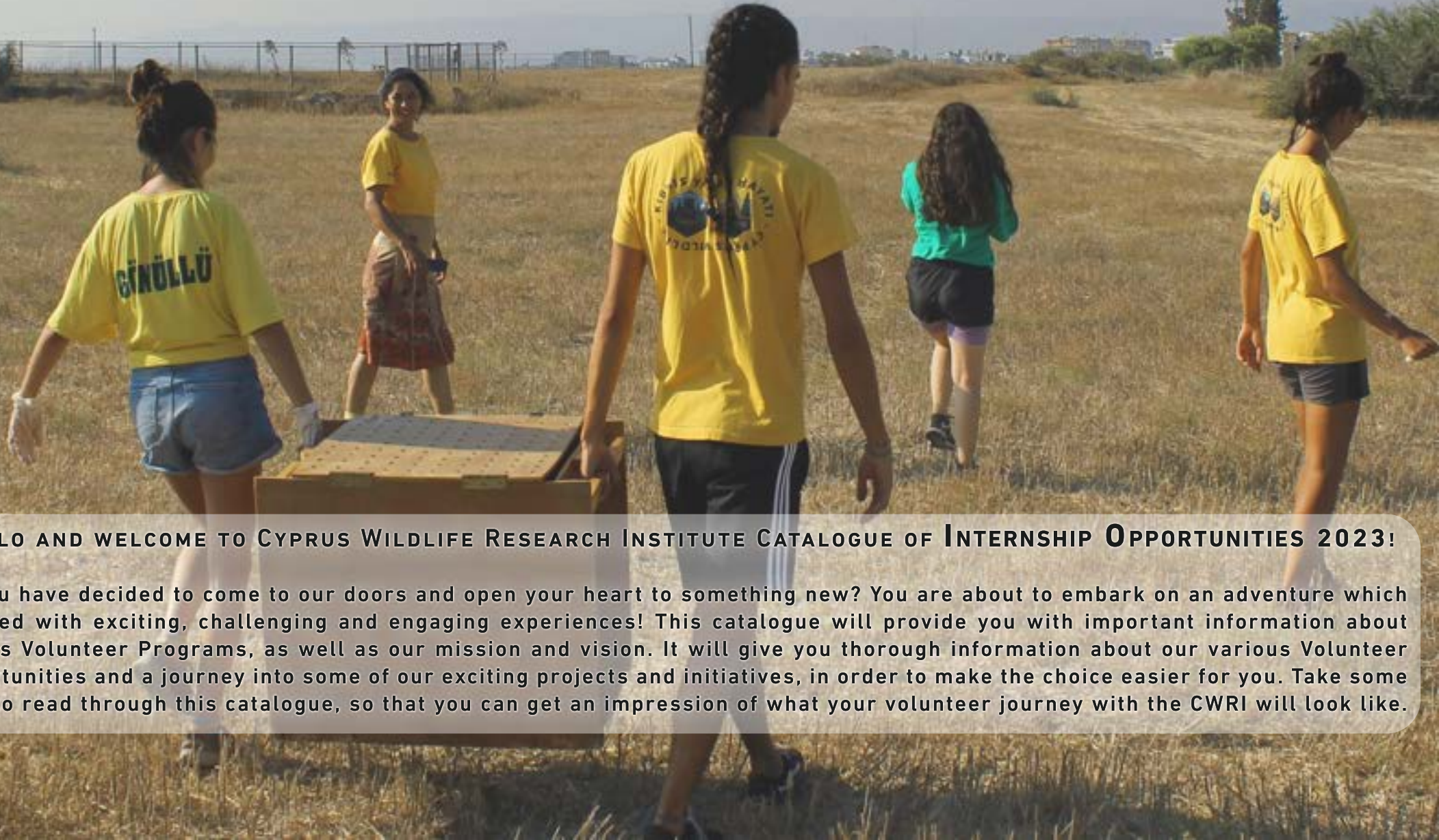


INTERNSHIP OPPORTUNITIES

CATALOGUE 2023



INTRODUCTION



HELLO AND WELCOME TO CYPRUS WILDLIFE RESEARCH INSTITUTE CATALOGUE OF INTERNSHIP OPPORTUNITIES 2023!

So you have decided to come to our doors and open your heart to something new? You are about to embark on an adventure which is filled with exciting, challenging and engaging experiences! This catalogue will provide you with important information about CWRI's Volunteer Programs, as well as our mission and vision. It will give you thorough information about our various Volunteer opportunities and a journey into some of our exciting projects and initiatives, in order to make the choice easier for you. Take some time to read through this catalogue, so that you can get an impression of what your volunteer journey with the CWRI will look like.

ABOUT US



CYPRUS WILDLIFE RESEARCH INSTITUTE IS A LEADING NONPROFIT NONGOVERNMENTAL ORGANIZATION ESTABLISHED IN 2018 IN CYPRUS. CWRI IS DEDICATED TO THE STUDY AND PROTECTION OF THE BIODIVERSITY OF CYPRUS THROUGH A WIDE RANGE OF ACTIVITIES INCLUDING WILDLIFE RESCUE AND REHABILITATION, ENVIRONMENTAL EDUCATION, SCIENTIFIC SURVEYS, MONITORING PROGRAMS, HABITAT MAPPING AND OTHERS. IT ALSO COLLABORATES WITH OTHER RESEARCH ORGANIZATIONS AND UNIVERSITIES, BOTH NATIONALLY AND INTERNATIONALLY, TO EXCHANGE KNOWLEDGE AND EXPERTISE. COMBINING THESE DIVERSE INITIATIVES, THE ORGANIZATION HELPS TO CONSERVE AND PROTECT ENDANGERED, RARE AND ENDEMIC SPECIES OF CYPRUS TO ENSURE THE LONG-TERM SURVIVAL OF THE ISLAND'S UNIQUE WILDLIFE AND ECOSYSTEMS

ABOUT US

THREE OPERATIONAL PROGRAMS MANAGED UNDER THE AUSPICES OF CWRI ARE:

- 1) RESCUE, TREATMENT AND REHABILITATION
- 2) RESEARCH AND CONSERVATION
- 3) AWARENESS RAISING & CAPACITY DEVELOPMENT.

RESCUE, TREATMENT AND REHABILITATION OPERATIONS TAKE PLACE IN WILDLIFE RESCUE AND REHABILITATION CENTER (WRRC) AND WILDLIFE HOSPITAL AND RESEARCH LABORATORY (WHRL). THESE FACILITIES PROVIDE MEDICAL TREATMENT AND CARE TO APPROXIMATELY 1 THOUSAND ANIMALS A YEAR, WHILE FOLLOWING STANDARDS OF THE INTERNATIONAL WILDLIFE REHABILITATION COUNCIL. IN ADDITION TO WRRC AND WHRL, CYPRUS MARINELIFE CENTER (CMC) OPERATES WITHIN THE MAIN CAMPUS OF CWRI, ADMITTING MARINE PATIENTS, INCLUDING GLOBALLY THREATENED SEA TURTLES.

RESEARCH CONDUCTED UNDER CWRI HELPS TO FILL THE DATA GAPS ON BIODIVERSITY OF CYPRIOT REGION, CONSTITUTING A PARAMOUNT ACTIVITY OF NATURE CONSERVATION. APART FROM IMPROVING THE LEVEL OF KNOWLEDGE OF LOCAL RARE, CRYPTIC AND ENDEMIC SPECIES, IT ENABLES AN EFFECTIVE MONITORING OF HABITATS AT THE LANDSCAPE LEVEL, AND DEVELOPMENT OF CONSERVATION STRATEGIES ENSURING SUSTAINABLE ECOSYSTEMS. LAST BUT NOT LEAST, BIOLOGICAL SAMPLES AND TISSUES ARE SAFELY PRESERVED WITHIN TWO BIOREPOSITORIES, BIOBANK AND SEEDBANK, SAFEGUARDING VALUABLE GENETIC INFORMATION FOR FUTURE RESEARCH PURPOSES.

OPERATED VIA CYPRUS ENVIRONMENTAL EDUCATION CENTER (CEEC), PROGRAMS AIMED AT RAISING AWARENESS AND DEVELOPING CAPACITY ARE ALSO REGULARLY EXECUTED. THESE INITIATIVES AIM TO BUILD ADMIRATION TOWARD LOCAL SPECIES, WHILE ENGAGING CYPRIOT CITIZENS, MINORITIES AND KEY STAKEHOLDERS (F.EX. DECISION-MAKERS, LOCAL AUTHORITIES, GOVERNMENTAL BODIES) IN A COLLABORATIVE ENVIRONMENTAL EFFORT. CEEC CONDUCTS SCIENTIFIC WORKSHOPS, TRAINING COURSES, AND GUIDED BIODIVERSITY TOURS, WHICH ARE IMMENSELY HELPFUL IN TERMS OF ACKNOWLEDGING AND BROADCASTING PRESSING ENVIRONMENTAL ISSUES, INCLUDING THREATS THAT DOMESTIC WILDLIFE IS CONSISTENTLY FACING. SUCH SYSTEMATIC AND MULTI-DISCIPLINARY APPROACH HELPS TO ACHIEVE A BETTER LEVEL OF PROTECTION OF LOCAL NATURE, WHILE SEEKING TO FIND THE RIGHT BALANCE BETWEEN ECONOMIC GROWTH ON THE ISLAND AND ENVIRONMENTAL SUSTAINABILITY.

CWRI INVITES NATIONAL AND INTERNATIONAL VOLUNTEERS FROM ANY BACKGROUND TO TRAIN ON SUBJECT-SPECIFIC SKILLS AND KNOWLEDGE, TO PARTICIPATE IN OBSERVING AND CONSERVING WILDLIFE IN CYPRUS.

YOUR SUPPORT AND EFFORT ARE TRULY APPRECIATED AND HELP US MAKE A DIFFERENCE.



INTERNSHIP OPPORTUNITIES





JOIN THE TEAM

WILDLIFE HOSPITAL IS LOOKING
FOR VOLUNTEERS!



WILDLIFE
H O S P I T A L

1

✉ INFO@CWRI.NET

 WWW.CWRI.NET

V E T STUDENTS F O R W I L D L I F E H O S P I T A L



PROJECT DESCRIPTION

BY APPLYING TO THIS PROGRAM, YOU WILL GET A CHANCE TO ATTEND THE TREATMENT AND REHABILITATION OF VARIOUS NATIVE, EXOTIC AND DOMESTIC SPECIES, SUCH AS REPTILES (SNAKES, TERRAPINS, TORTOISES, SEA TURTLES), BIRDS (RAPTORS, OWLS, SONGBIRDS, WADING BIRDS AND OTHERS) AND MAMMALS (DONKEYS, FOXES, HEDGEHOGS ...). YOU WILL NOT ONLY RECEIVE THEORY, BUT MORE IMPORTANTLY, PRACTICE CLINICAL EXAMINATIONS TO CORRECTLY DETERMINE DIAGNOSIS, PROGNOSIS, AND MEDICAL TREATMENT PLAN.

WILDLIFE HOSPITAL AND WILDLIFE RESCUE AND REHABILITATION CENTER, OPERATED BY CYPRUS WILDLIFE RESEARCH INSTITUTE, ARE AMONG THE FOREMOST WILDLIFE TREATMENT AND REHABILITATION CENTERS IN THE EASTERN MEDITERRANEAN REGION. LOCATED WITHIN TAŞKENT NATURE PARK, OUR WILDLIFE HOSPITAL RECEIVES NEARLY 1000 ANIMAL PATIENTS, FROM AS MANY AS 160 SPECIES EACH YEAR. AFTER THE INITIAL ADMISSION, THEY RECEIVE SPECIALIZED, HIGH-QUALITY CARE TO ENSURE THEIR SAFE RETURN TO THE WILD. WE NOW PROVIDE A UNIQUE OPPORTUNITY FOR STUDENTS AND GRADUATES FROM VETERINARY SCIENCE PROGRAMS TO JOIN OUR TEAM AND EXPERIENCE DAILY LIFE AT OUR REMARKABLE FACILITY, ONE OF A KIND IN THE WHOLE OF CYPRUS!



OUR VOLUNTEERS ARE INVOLVED WITH EVERY ASPECT OF WILDLIFE TREATMENT AND REHABILITATION, INCLUDING ADMISSION, STABILIZATION, INITIAL EXAMINATION, TREATMENT, REHABILITATION, AND PHYSICAL THERAPY. ADDITIONALLY, THEY HELP TO ENSURE THE SMOOTH FUNCTIONING OF THE FACILITY AND HIGH STANDARDS OF ANIMAL CARE.

SPECIFIC DUTIES INCLUDE:

- HANDLING AND RESTRAINT OF WILDLIFE
- EXAMINATION AND CRITICAL CARE OF NEWLY ADMITTED PATIENTS
- SPECIALIZED TREATMENT AND THERAPY
- ASSESSMENT OF THE OVERALL HEALTH STATE OF ANIMALS IN CARE
- ASSISTING WITH DIAGNOSTIC IMAGING AND MEDICAL PROCEDURES
- GENERAL AND SPECIALIZED ANIMAL CARE
- UPDATING MEDICAL CARE AND TREATMENT PROTOCOLS
- CLEANING AND SANITIZING HOSPITAL FACILITIES SETTINGS
- ADMINISTRATIVE TASKS
- RESEARCHING CURRENT TRENDS APPLIED IN WILDLIFE REHABILITATION



V E T STUDENTS F O R WILDLIFE HOSPITAL



APART FROM TAKING CARE OF INJURED, SICK AND ORPHANED NATIVE FAUNA, OUR WILDLIFE HOSPITAL CARES AND TREATS FARM ANIMALS AND EXOTIC SPECIES THAT ARE HOUSED ON OUR PREMISES. THESE ANIMALS ARE BEING FREQUENTLY BROUGHT TO OUR FACILITY DUE TO POOR WELFARE CONDITIONS OR ILLEGAL ORIGIN. OUR VOLUNTEERS HELP TO ENSURE THE BEST POSSIBLE CARE (INCLUDING GENERAL ANIMAL CARE AND SPECIALIZED MEDICAL CARE) TO ALLOW THEM TO RESTORE THEIR SPECIES-SPECIFIC BEHAVIORS AND GOOD LEVELS OF PHYSICAL AND PSYCHOLOGICAL HEALTH.

V E T STUDENTS F O R W I L D L I F E H O S P I T A L

TRAINING DURING THE PROJECT

OUR FACILITY AIMS FOR THE HIGHEST STANDARDS OF ANIMAL CARE. FOR THIS REASON, WE ASK OUR VOLUNTEERS TO HAVE AN EDUCATIONAL BACKGROUND IN VETERINARY SCIENCE AND RELATED FIELDS. PREVIOUS EXPERIENCE WITH WILDLIFE IS NOT REQUIRED. OUR TEAM OF EXPERTS WILL GUIDE YOU THROUGH THE PROCEDURES AND PROVIDE YOU WITH ALL THE NECESSARY INFORMATION TO ENSURE THE MOST VALUABLE WILDLIFE VET EXPERIENCE WHILE MAKING SURE THAT ALL SAFETY AND WELFARE REQUIREMENTS OF WILDLIFE REHABILITATION ARE MET.

WHILST WE PREFER THAT APPLICANTS HAVE SOME EXPERIENCE IN THE RELEVANT FIELD, WE WELCOME ALL APPLICATIONS AND WILL REVIEW EACH EQUALLY AND FAIRLY. DO NOT LET THIS DISSUADE YOU FROM APPLYING!



REQUIREMENTS

- MINIMUM DURATION OF STAY: 1 MONTH
- GOOD PROFICIENCY IN ENGLISH
- EDUCATIONAL BACKGROUND IN VETERINARY AND RELATED FIELDS
- RELIABILITY, TRUSTWORTHINESS, RESPONSIBILITY, DEDICATION



ACCOMMODATION, FOOD AND TRANSPORT

OUR WILDLIFE HOSPITAL IS LOCATED WITHIN TAŞKENT NATURE PARK, WHICH IS SITUATED IN KYRENIA DISTRICT IN NORTHERN CYPRUS. OUR VOLUNTEERS ARE PROVIDED THE ACCOMMODATION AND KITCHEN FACILITIES, ALL WITHIN THE WALKING DISTANCE OF FACILITY'S CAMPUS. AFTER APPLYING TO THE PROGRAM, OUR COORDINATOR WILL HELP YOU WITH THE TRAVEL ARRANGEMENTS AND WILL DISCUSS THE POSSIBILITY OF AIRPORT TRANSFER ORGANIZED BY CWRI. PLEASE APPLY TO RECEIVE FURTHER DETAILS.

HIGHLIGHTS OF THE PROGRAMME

- GAIN VALUABLE WORK EXPERIENCE IN WILDLIFE HOSPITAL
- LEARN HOW TO HANDLE AND RESTRAIN WILD BIRDS, REPTILES, AND MAMMALS
- PRACTICE CLINICAL EXAMINATION, EMERGENCY CARE, AND MEDICAL SKILLS ON A WIDE VARIETY OF SPECIES
- ASSIST OUR EXPERT WILDLIFE VETERINARIAN WITH MEDICAL PROCEDURES, SURGERIES, AND NECROPSIES
- LEARN HOW TO RESTRAIN AND POSITION WILDLIFE FOR RADIOGRAPHY
- LEARN HOW TO IDENTIFY HUNDREDS OF SPECIES, INCLUDING NATIVE MEDITERRANEAN FAUNA, EXOTIC AND DOMESTIC SPECIES
- LIVE IN AN AREA SURROUNDED BY NATURE AND WITH A WHOLE ISLAND VIEW
- WORK IN A MULTINATIONAL TEAM OF VOLUNTEERS



V E T STUDENTS F O R W I L D L I F E H O S P I T A L



COST

THERE IS NO FEE FOR THE VOLUNTEERING OPPORTUNITY ITSELF. FOOD, ACCOMMODATION, AND OTHER SERVICES ARE PROVIDED TO THE VOLUNTEERS FOR A FLAT FEE OF 20€ PER DAY (TWO MEALS PER DAY, ELECTRICITY, WATER, INTERNET, ESSENTIAL FOOD SUPPLIES, THE USE OF KITCHEN AND LAUNDRY ROOM INCL.). VOLUNTEERS ARE ALSO INVITED TO JOIN THE FIELD TRIPS, ORGANIZED BY CWRI ON THEIR DAY OFF, AT NO ADDITIONAL COST. FEES FOR THIS POSITION CAN BE COVERED BY ERASMUS+ SCHOLARSHIP.



V E T STUDENTS

F O R W I L D L I F E H O S P I T A L

TO SUBMIT YOUR APPLICATION, PLEASE VISIT:

[HTTPS://V.CWRI.NET/PROJECTS/35](https://v.cwri.net/projects/35)

OUR TEAM WILL CONTACT YOU AND SHARE ALL THE NECESSARY INFORMATION TO ARRANGE YOUR STAY.

PLEASE CONTACT US AT [INFO@CWRI.NET](mailto:info@cwri.net) IF YOU HAVE ANY QUESTIONS OR TROUBLE WITH THE APPLICATION SYSTEM.



2

✉ INFO@CWRI.NET

🌐 WWW.CWRI.NET

WILDLIFE
RESCUE AND REHABILITATION CENTER



VOLUNTEER WITH US

IN WILDLIFE RESCUE AND REHABILITATION CENTER

OPERATED BY CYPRUS WILDLIFE RESEARCH INSTITUTE, OUR WILDLIFE RESCUE AND REHABILITATION CENTER REPRESENTS THE ONLY FACILITY SPECIALIZING IN THE TREATMENT OF INJURED WILDLIFE, IN THE WHOLE OF CYPRUS. OUR VOLUNTEERS GET A CHANCE TO LEARN ABOUT HUNDREDS OF SPECIES OF NATIVE, EXOTIC, AND DOMESTIC ANIMALS, WHILE HELPING THEM RECOVER FROM INJURIES, ILLNESSES, AND THE TRAUMA OF BEING ORPHANED, ILLEGALLY TRAFFICKED, OR KEPT IN POOR WELFARE CONDITIONS. BY APPLYING TO THIS PROGRAM, YOU WILL LEARN AND ATTEND THE TREATMENT AND REHABILITATION OF VARIOUS NATIVE, EXOTIC AND DOMESTIC SPECIES, SUCH AS REPTILES (SNAKES, TERRAPINS, TORTOISES, SEA TURTLES), BIRDS (RAPTORS, OWLS, SONGBIRDS, WADING BIRDS AND OTHERS) OR MAMMALS (DONKEYS, FOXES, HEDGEHOGS ...). YOU WILL NOT ONLY LEARN THEORY, BUT PRACTICE HOW TO SAFELY RESTRAIN AND RELOCATE ANIMALS, TAKE MORPHOMETRIC MEASUREMENTS, BAND THE BIRDS AND PROVIDE SPECIES-SPECIFIC ANIMAL CARE.



ANIMAL CARETAKERS FOR WILDLIFE RESCUE CENTER



PROJECT DESCRIPTION

EACH YEAR, HUNDREDS OF WILD ANIMALS ARE BROUGHT INTO TAŞKENT NATURE PARK DUE TO BEING ORPHANED, SICK, OR INJURED. AFTER THE INITIAL ADMISSION, THEY RECEIVE SPECIALIZED, HIGH-QUALITY CARE, MEDICAL TREATMENT, AND PHYSICAL REHABILITATION TO ENSURE THEIR SAFE RETURN TO THE WILD. OUR VOLUNTEERS AND INTERNS ARE INVOLVED WITH MULTIPLE ASPECTS RELATED TO THIS PROCESS.

ANIMAL CARETAKERS FOR WILDLIFE RESCUE CENTER



SPECIFIC DUTIES INCLUDE:

- GENERALIZED AND SPECIALIZED CARE OF VARIOUS NATIVE SPECIES OF BIRDS, MAMMALS, AND REPTILES OF CYPRUS
- REHABILITATION OF INJURED WILDLIFE
- MONITORING OF BEHAVIOR AND POSTURE OF ANIMALS IN REHABILITATION FACILITIES AND SANCTUARY
- ANIMAL HEALTH CHECKUPS, WEIGHING, RINGING, MEASURING
- UPDATING ADMISSION PROTOCOLS
- DESIGNING AND CONSTRUCTING ANIMAL ENRICHMENTS
- MAINTAINING FACILITIES AND GROUNDS TO ENSURE SMOOTH FUNCTIONING AND HIGH STANDARDS
- ATTENDING WILDLIFE RELEASES AND EDUCATIONAL EVENTS

TRAINING DURING THE PROJECT

OUR FACILITY AIMS FOR THE HIGHEST STANDARDS OF ANIMAL CARE. FOR THIS REASON, WE EXPECT OUR VOLUNTEERS AND INTERNS TO BE STUDENTS OR GRADUATES OF PROGRAMS RELATED TO, BUT NOT LIMITED TO BIOLOGY, ANIMAL HUSBANDRY, AGRICULTURE, FORESTRY, VETERINARY AND SIMILAR. PREVIOUS EXPERIENCE IN THE FIELD OF WILDLIFE REHABILITATION, ANIMAL CARE, AND CONSERVATION IS PREFERABLE BUT NOT A PREREQUISITE. OUR TEAM WILL PROVIDE YOU WITH THE APPROPRIATE TRAINING AND SUPPORT TO ENSURE THAT ALL SAFETY AND WELFARE REQUIREMENTS OF WILDLIFE REHABILITATION ARE MET. WE EXPECT ALL TRAINEES TO BE ENTHUSIASTIC AND WILLING TO LEARN WHILE FOLLOWING THE CODE OF ETHICS AT ALL TIMES.

WHILST WE PREFER THAT APPLICANTS HAVE SOME EXPERIENCE IN THE RELEVANT FIELD, WE WELCOME ALL APPLICATIONS AND WILL REVIEW EACH EQUALLY AND FAIRLY. DO NOT LET THIS DISSUADE YOU FROM APPLYING!



ACCOMMODATION, FOOD AND TRANSPORT

THE CAMPUS OF CWRI IS LOCATED WITHIN TAŞKENT NATURE PARK, WHICH IS SITUATED IN KYRENIA DISTRICT IN NORTHERN CYPRUS. OUR VOLUNTEERS ARE PROVIDED THE ACCOMMODATION AND KITCHEN FACILITIES, ALL WITHIN THE WALKING DISTANCE OF THE FACILITY'S CAMPUS. AFTER APPLYING TO THE PROGRAM, OUR COORDINATOR WILL HELP YOU WITH THE TRAVEL ARRANGEMENTS AND DISCUSS THE POSSIBILITY OF AIRPORT TRANSFER ORGANIZED BY CWRI. PLEASE APPLY TO RECEIVE FURTHER DETAILS.

ANIMAL CARETAKERS FOR WILDLIFE RESCUE CENTER



REQUIREMENTS

- MINIMUM DURATION OF STAY: 1 MONTH
- ENGLISH LANGUAGE
- EDUCATIONAL BACKGROUND IN BIOLOGY, ANIMAL HUSBANDRY, AGRICULTURE, ANIMAL SCIENCE, FORESTRY, VETERINARY AND SIMILAR
- MODERATE LEVEL OF FITNESS
- TEAMWORK
- RESPONSIBILITY, DEDICATION, RESPECTFULNESS



ANIMAL CARETAKERS FOR WILDLIFE RESCUE CENTER



COST

THERE IS NO FEE FOR THE VOLUNTEERING OPPORTUNITY ITSELF. FOOD, ACCOMMODATION, AND OTHER SERVICES ARE PROVIDED TO THE VOLUNTEERS FOR A FLAT FEE OF 20€ PER DAY (TWO MEALS PER DAY, ELECTRICITY, WATER, INTERNET, ESSENTIAL FOOD SUPPLIES, THE USE OF KITCHEN AND LAUNDRY ROOM INCL.). VOLUNTEERS ARE ALSO INVITED TO JOIN THE FIELD TRIPS, ORGANIZED BY CWRI ON THEIR DAY OFF, AT NO ADDITIONAL COST. FEES FOR THIS POSITION CAN BE COVERED BY ERASMUS+ SCHOLARSHIP.

HIGHLIGHTS OF THE PROGRAM

- GAIN VALUABLE WORK EXPERIENCE IN THE FOREMOST WILDLIFE RESCUE AND REHABILITATION CENTER
- LEARN HOW TO HANDLE, RESTRAIN, MEASURE, AND RING WILD ANIMALS
- LEARN HOW TO IDENTIFY HUNDREDS OF SPECIES, INCLUDING NATIVE MEDITERRANEAN FAUNA, EXOTIC AND DOMESTIC SPECIES
- LEARN MORE ABOUT INTRA AND INTER-SPECIES-SPECIFIC BEHAVIORS OF NATIVE, EXOTIC, AND DOMESTIC ANIMALS
- JOIN EDUCATIONAL EVENTS
- LIVE IN AN AREA SURROUNDED BY NATURE AND WITH A WHOLE ISLAND VIEW
- WORK IN A MULTINATIONAL TEAM OF VOLUNTEERS





ANIMAL CARETAKERS FOR WILDLIFE RESCUE CENTER

TO SUBMIT YOUR APPLICATION, PLEASE VISIT:

[HTTPS://V.CWRI.NET/PROJECTS/32](https://v.cwri.net/projects/32)

OUR TEAM WILL CONTACT YOU AND SHARE ALL THE NECESSARY INFORMATION TO ARRANGE YOUR STAY.

PLEASE CONTACT US AT [INFO@CWRI.NET](mailto:info@cwri.net) IF YOU HAVE ANY QUESTIONS OR TROUBLE WITH THE APPLICATION SYSTEM.



3

WILDLIFE

RESCUE AND REHABILITATION CENTER



**BABY NURSERY VOLUNTEERS
WANTED!**

✉ INFO@CWRI.NET

🌐 WWW.CWRI.NET

WILDLIFE RESCUE AND REHABILITATION CENTER, OPERATED BY CYPRUS WILDLIFE RESEARCH INSTITUTE, IS AMONG THE FOREMOST WILDLIFE TREATMENT AND REHABILITATION CENTERS IN THE EASTERN MEDITERRANEAN REGION. APART FROM INJURED AND SICK FAUNA, WE RECEIVE HUNDREDS OF HUNGRY ORPHANED ANIMAL BABIES THAT NEED LOTS OF QUALITY CARE. BABY BIRDS (HATCHLINGS, NESTLINGS, FLEDGLINGS), HOGLETS AND LEVERETS ARE AMONGST THE MOST COMMONLY ADMITTED YOUNGSTERS, BUT BAT, FOX, DONKEY OR SEA TURTLE JUVENILES ARE FREQUENTLY TREATED AS WELL.



CARETAKERS FOR BABY NURSERY



PROJECT DESCRIPTION

LOCATED WITHIN TAŞKENT NATURE PARK, OUR WILDLIFE HOSPITAL RECEIVES NEARLY 1000 ANIMAL PATIENTS, FROM AS MANY AS 160 SPECIES EACH YEAR. BETWEEN APRIL AND JULY, HUNDREDS OF INJURED, SICK, AND ORPHANED BABIES ARE BROUGHT TO THE WILDLIFE HOSPITAL AND OUR DEDICATED VOLUNTEERS HELP TO TAKE CARE OF THESE INNOCENT SOULS. AFTER THE INITIAL ADMISSION, BABIES NEED TO RECEIVE SPECIALIZED, HIGH-QUALITY CARE TO ENSURE HEALTHY AND STEADY GROWTH WITHOUT IMPRINTING ON HUMANS TO FACILITATE THEIR SUCCESSFUL RETURN TO THE WILD. OUR VOLUNTEERS ARE INVOLVED IN ALL TASKS RELATED TO THE REHABILITATION OF YOUNG WILDLIFE, INCLUDING ADMISSION, INITIAL EXAMINATION, TREATMENT, AND GENERAL ANIMAL CARE.

CARETAKERS FOR BABY NURSERY

PLEASE NOTE, THAT BABY BIRDS (AS WELL AS JUVENILES OF OTHER SPECIES) REQUIRE FEEDING EVERY 30 OR 60 MINUTES DEPENDING ON THEIR AGE. ALL PRECAUTIONARY MEASURES TO PREVENT TAMING, HABITUATION AND IMPRINTING ON HUMANS AS WELL AS THE DEVELOPMENT OF ABNORMAL BEHAVIORS MUST BE FOLLOWED AT ALL



SPECIFIC DUTIES INCLUDE:

- HELPING WITH THE INITIAL ADMISSION, EXAMINATION, AND TREATMENT
- REGULAR FEEDING AT SHORT INTERVALS; DAY AND NIGHT EVERY FEW HOURS
- ADMINISTERING ORAL MEDICATION AND SUPPLEMENTS
- DAILY CLEANING OF THE LIVING SPACES (ENCLOSURES, CAGES, BOXES ...)
- TAKING MEASUREMENTS (WEIGHT, WING LENGTH) AND RECORD KEEPING
- SIMPLE DATA ANALYSIS (GROWTH RATE, RELEASE RATE)
- RELEASE OF MATURED BABIES
- UPKEEP OF FACILITIES TO ENSURE A SANITARY ENVIRONMENT, SMOOTH FUNCTIONING, AND HIGH STANDARDS OF ANIMAL CARE

TRAINING DURING THE PROJECT

OUR TEAM OF EXPERTS WILL GUIDE YOU THROUGH THE PROCEDURES AND PROVIDE YOU WITH ALL THE NECESSARY INFORMATION TO ENSURE THE MOST VALUABLE INFANT WILDLIFE REHABILITATION EXPERIENCE WHILE MAKING SURE THAT ALL SAFETY AND WELFARE REQUIREMENTS ARE MET.



ACCOMMODATION, FOOD AND TRANSPORT

OUR WILDLIFE HOSPITAL IS LOCATED WITHIN TAŞKENT NATURE PARK, WHICH IS SITUATED IN KYRENIA DISTRICT IN NORTHERN CYPRUS. OUR VOLUNTEERS ARE PROVIDED THE ACCOMMODATION AND KITCHEN FACILITIES, ALL WITHIN THE WALKING DISTANCE OF THE FACILITY'S CAMPUS. AFTER APPLYING TO THE PROGRAM, OUR COORDINATOR WILL HELP YOU WITH THE TRAVEL ARRANGEMENTS AND WILL DISCUSS THE POSSIBILITY OF AIRPORT TRANSFER ORGANIZED BY CWRI. PLEASE APPLY TO RECEIVE FURTHER DETAILS.

CARETAKERS FOR BABY NURSERY

REQUIREMENTS

- MINIMUM DURATION OF STAY: 3 MONTHS
- ENGLISH LANGUAGE
- RESPONSIBILITY AND DEDICATION TO THE JOB
- WILLINGNESS TO WORK NIGHT SHIFTS



CARETAKERS FOR BABY NURSERY



COST

THERE IS NO FEE FOR THE VOLUNTEERING OPPORTUNITY ITSELF. FOOD, ACCOMMODATION, AND OTHER SERVICES ARE PROVIDED TO THE VOLUNTEERS FOR A FLAT FEE OF 15€ PER DAY (TWO MEALS PER DAY, ELECTRICITY, WATER, INTERNET, ESSENTIAL FOOD SUPPLIES, THE USE OF KITCHEN AND LAUNDRY ROOM INCL.). VOLUNTEERS ARE ALSO INVITED TO JOIN THE FIELD TRIPS, ORGANIZED BY CWRI ON THEIR DAY OFF, AT NO ADDITIONAL COST. FEES FOR THIS POSITION CAN BE COVERED BY THE ERASMUS+ SCHOLARSHIP.

HIGHLIGHTS OF THE PROGRAMME

- GAIN VALUABLE WORK EXPERIENCE IN THE WILDLIFE RESCUE CENTER
- LEARN ABOUT CAPTIVE WILDLIFE CARE AND HOW TO HANDLE AND RESTRAIN JUVENILE WILD ANIMALS
- ASSIST WITH EMERGENCY CARE AND TREATMENT OF INJURED, SICK, AND ORPHANED INFANT WILDLIFE
- LEARN TO IDENTIFY JUVENILES OF A DIVERSE RANGE OF BIRDS (PASSERINES, OWLS, BIRDS OF PREY), MAMMALS (DONKEYS, FOXES, BATS) AND REPTILES (SNAKES, TURTLES)
- JOIN EDUCATIONAL EVENTS
- LIVE IN AN AREA SURROUNDED BY NATURE AND WITH A WHOLE ISLAND VIEW
- WORK IN A MULTINATIONAL TEAM OF VOLUNTEERS





CARETAKERS FOR BABY NURSERY

TO SUBMIT YOUR APPLICATION, PLEASE VISIT:

[HTTPS://V.CWRI.NET/PROJECTS/38](https://v.cwri.net/projects/38)

OUR TEAM WILL CONTACT YOU AND SHARE ALL THE NECESSARY INFORMATION TO ARRANGE YOUR STAY.

PLEASE CONTACT US AT [INFO@CWRI.NET](mailto:info@cwri.net) IF YOU HAVE ANY QUESTIONS OR TROUBLE WITH THE APPLICATION SYSTEM.



✉ INFO@CWRI.NET

🌐 WWW.CWRI.NET

VOLUNTEER WITH US

CONTENT CREATORS FOR WILDLIFE RESCUE TEAM NEEDED!



4

WILDLIFE
RESCUE AND REHABILITATION CENTER

CYPRUS WILDLIFE RESEARCH INSTITUTE IS A NON-PROFIT ORGANIZATION ESTABLISHED WITH THE AIM TO PROTECT THE WILDLIFE AND HABITATS OF CYPRUS. LOCATED WITHIN TAŞKENT NATURE PARK, OUR WILDLIFE RESCUE AND REHABILITATION CENTER RESCUES MORE THAN 1000 INDIVIDUALS FROM MORE THAN 160 SPECIES EVERY YEAR. APART FROM INJURED, SICK, TRAPPED OR ORPHANED NATIVE FAUNA, OUR WILDLIFE RESCUE TEAM HELPS TO TRANSPORT EXOTIC AND DOMESTIC ANIMALS THAT ARE CONFISCATED BY LOCAL AUTHORITIES AND PASSED TO OUR CARE DUE TO BEING MISTREATED OR ILLEGALLY TRAFFICKED. WE NOW OFFER A NEW OPPORTUNITY FOR VIDEO CONTENT CREATORS FROM ALL COUNTRIES TO JOIN OUR WILDLIFE RESCUE TEAM ON THEIR JOURNEYS AND HELP US CAPTURE THESE CHALLENGING YET REWARDING MOMENTS ON VIDEO.



CONTENT CREATORS FOR WILDLIFE RESCUE TEAM



PROJECT DESCRIPTION

AS A VOLUNTEER VIDEO CONTENT CREATOR, YOU WILL HAVE A CHANCE TO WITNESS AND DOCUMENT THE CAPTURE OF ANIMALS THAT ARE BEING RESCUED BY OUR EXPERIENCED WILDLIFE RESCUE TEAM. AFTER BEING ADMITTED TO OUR WILDLIFE HOSPITAL, OUR ANIMAL PATIENTS RECEIVE SPECIALIZED TREATMENT AND CARE TO ENSURE THEIR SAFE RETURN TO NATURE. VOLUNTEERING WITH US WILL ALLOW YOU TO EXPERIENCE DAILY LIFE IN OUR WILDLIFE RESCUE AND REHABILITATION CENTER, WHILE REGULARLY VIDEO RECORDING THE HEALING PROGRESS OF OUR ANIMAL PATIENTS.

CONTENT CREATORS FOR WILDLIFE RESCUE TEAM



SPECIFIC DUTIES INCLUDE:

- DAILY ATTEND WILDLIFE RESCUE OPERATIONS
- PRODUCE AND EDIT VIDEO CONTENT CAPTURING THE RESCUE OF ANIMALS IN NEED
- OBSERVE AND VIDEO RECORD THE TREATMENT AND PROGRESS OF PATIENTS IN OUR WILDLIFE RESCUE AND REHABILITATION CENTER
- ATTEND AND VIDEO RECORD THE RETURN OF REHABILITATED ANIMALS BACK TO NATURE
- ANALYZE THE MOST COMMON CAUSES OF ADMISSION OF OUR ANIMAL PATIENTS

TRAINING DURING THE PROJECT

PREVIOUS EXPERIENCE WITH WILD ANIMALS IS NOT REQUIRED FOR THIS POSITION. OUR EXPERIENCED TEAM WILL PROVIDE YOU WITH THE NECESSARY INFORMATION AND TRAINING TO ENSURE YOUR MAXIMUM SAFETY DURING ENCOUNTERS WITH ANIMALS IN VARIOUS SITUATIONS AND SCENARIOS (SUCH AS DURING THE RESCUE, IN REHABILITATION, AND IN THE WILD).



ACCOMMODATION, FOOD AND TRANSPORT

CAMPUS OF CWRI IS LOCATED WITHIN TAŞKENT NATURE PARK, WHICH IS SITUATED IN KYRENIA DISTRICT IN NORTHERN CYPRUS. OUR VOLUNTEERS ARE PROVIDED THE ACCOMMODATION AND KITCHEN FACILITIES, ALL WITHIN THE WALKING DISTANCE OF THE FACILITY'S CAMPUS. AFTER APPLYING TO THE PROGRAM, OUR COORDINATOR WILL HELP YOU WITH THE TRAVEL ARRANGEMENTS AND WILL DISCUSS THE POSSIBILITY OF AIRPORT TRANSFER ORGANIZED BY CWRI. PLEASE APPLY TO RECEIVE FURTHER DETAILS.

CONTENT CREATORS FOR WILDLIFE RESCUE TEAM

REQUIREMENTS

- MINIMUM DURATION OF STAY: 1 MONTH
- ENGLISH LANGUAGE
- AT LEAST BASIC VIDEO RECORDING AND EDITING SKILLS
- VIDEO RECORDING GEAR
- NOT BEING AFRAID OF ANIMALS (YOU WILL NOT HANDLE WILDLIFE BUT MAY BE ASKED TO RECORD RAPTORS OR SNAKES FROM UP CLOSE)
- WILLING TO ATTEND RESCUE MISSIONS EVEN AT NIGHT
- CREATIVITY AND ATTENTION TO DETAIL



CONTENT CREATORS FOR WILDLIFE RESCUE TEAM

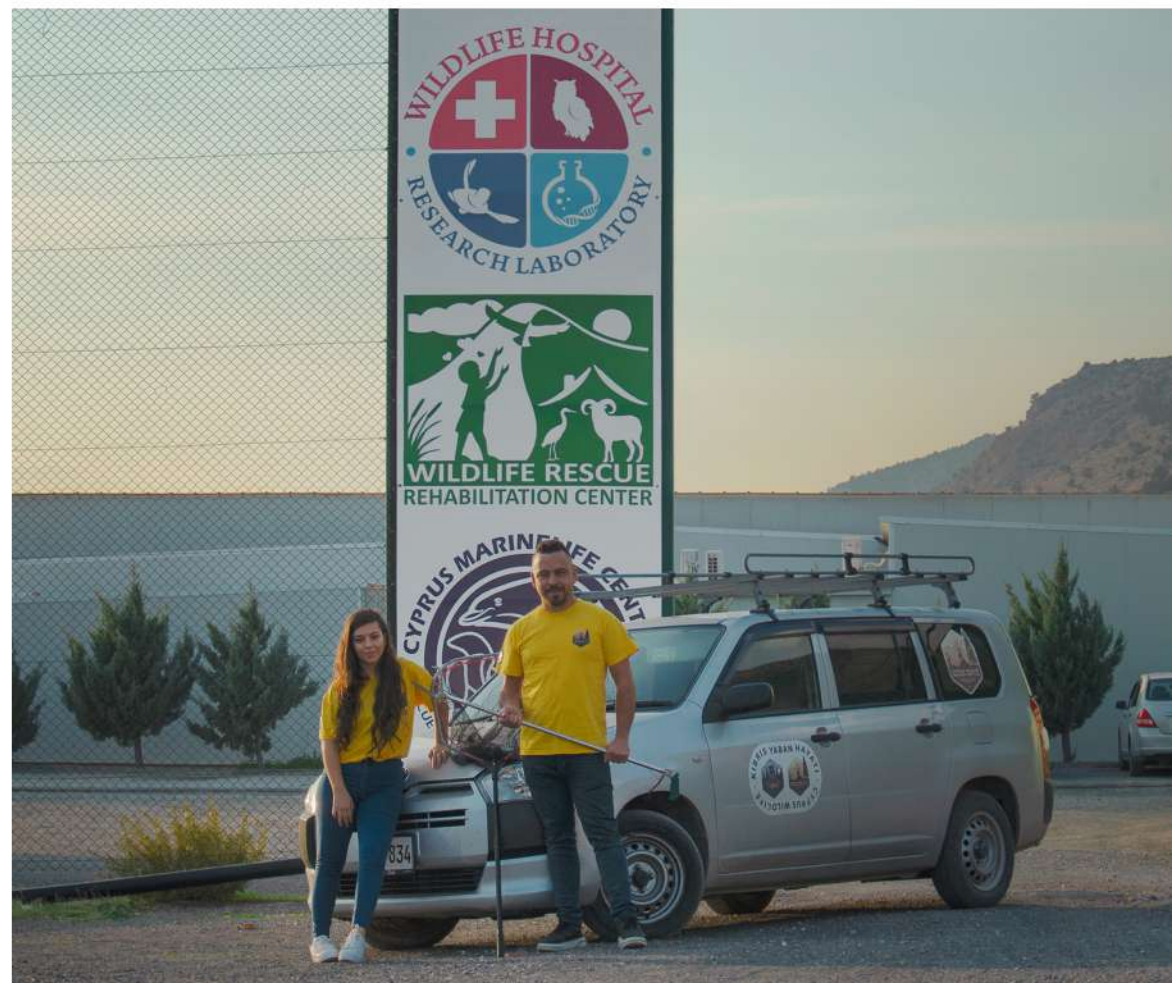


COST

THERE IS NO FEE FOR THE VOLUNTEERING OPPORTUNITY ITSELF. FOOD, ACCOMMODATION, AND OTHER SERVICES ARE PROVIDED TO THE VOLUNTEERS FOR A FLAT FEE OF 20€ PER DAY (TWO MEALS PER DAY, ELECTRICITY, WATER, INTERNET, ESSENTIAL FOOD SUPPLIES, THE USE OF KITCHEN AND LAUNDRY ROOM INCL.). VOLUNTEERS ARE ALSO INVITED TO JOIN THE FIELD TRIPS, ORGANIZED BY CWRI ON THEIR DAY OFF, AT NO ADDITIONAL COST. FEES FOR THIS POSITION CAN BE COVERED BY THE ERASMUS+ SCHOLARSHIP.

HIGHLIGHTS OF THE PROGRAMME

- GAIN VALUABLE WORK EXPERIENCE TO KICKSTART YOUR CAREER IN DIGITAL MEDIA AND JOURNALISM
- DEVELOP YOUR SKILLS AS A DIRECTOR, FIELD PRODUCER, AND EDITOR
- LEARN HOW TO TURN YOUR IDEAS INTO POWERFUL VIDEOS
- WITNESS THE FASCINATING PROCESS OF A WILDLIFE RESCUE MISSION, WILDLIFE REHABILITATION, AND RELEASE
- EXPERIENCE DAILY LIFE IN A REMARKABLE FACILITY, ONE OF A KIND IN THE WHOLE OF CYPRUS
- LEARN ABOUT HUNDREDS OF SPECIES, INCLUDING NATIVE MEDITERRANEAN FAUNA, EXOTIC AND DOMESTIC ANIMALS
- MEET OUR MULTINATIONAL TEAM OF VOLUNTEERS AND EMPLOYEES
- LIVE IN AN AREA SURROUNDED BY NATURE AND WITH A WHOLE ISLAND VIEW
- GAIN UNFORGETTABLE MEMORIES!



A man with dark, curly hair and a beard, wearing a green t-shirt, is looking down at a small, light-colored fox pup. The pup is being held by a hand wearing a white glove. The background shows a wooden structure and some dry grass.

CONTENT CREATORS FOR WILDLIFE RESCUE TEAM

TO SUBMIT YOUR APPLICATION, PLEASE VISIT:

[HTTPS://V.CWRI.NET/PROJECTS/33](https://v.cwri.net/projects/33)

OUR TEAM WILL CONTACT YOU AND SHARE ALL THE NECESSARY INFORMATION TO ARRANGE YOUR STAY.

PLEASE CONTACT US AT [INFO@CWRI.NET](mailto:info@cwri.net) IF YOU HAVE ANY QUESTIONS OR TROUBLE WITH THE APPLICATION SYSTEM.



JOIN OUR TEAM

VOLUNTEERS FOR WILDLIFE HOSPITAL NEEDED!

5

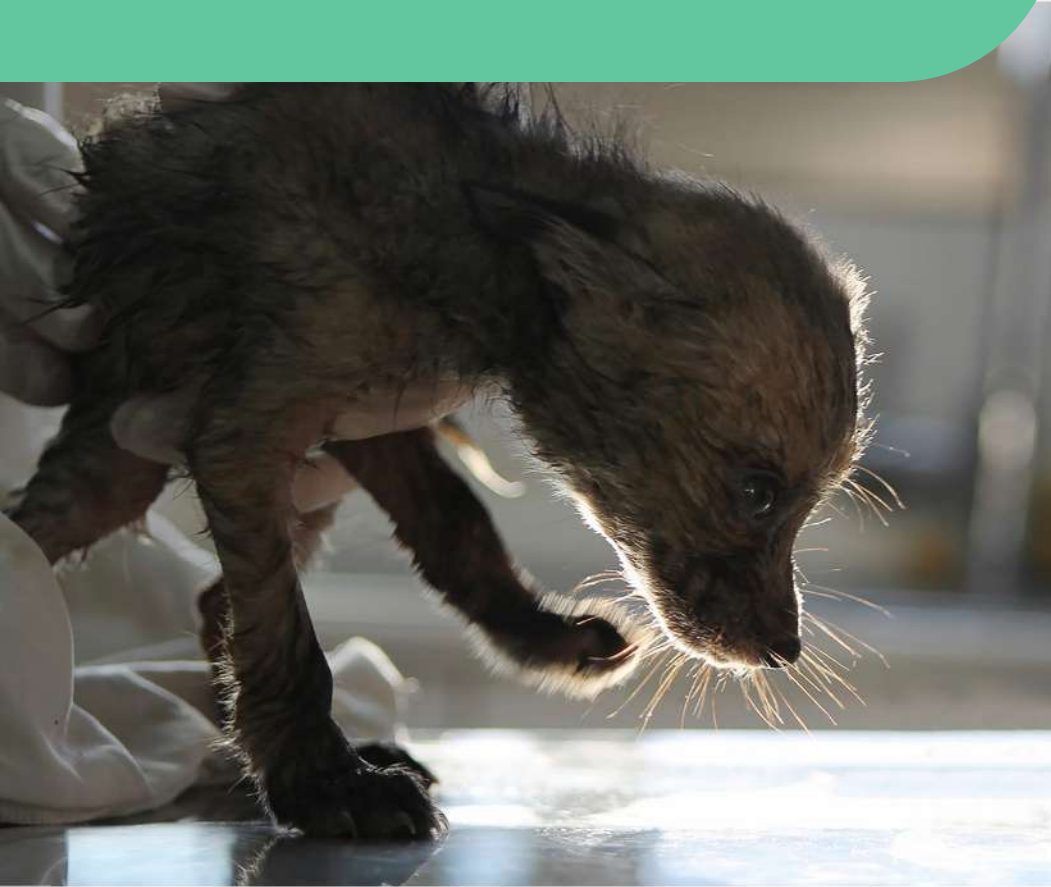
WILDLIFE
HOSPITAL

✉ INFO@CWRI.NET

 WWW.CWRI.NET



ANIMAL CARETAKERS FOR WILDLIFE HOSPITAL



PROJECT DESCRIPTION

LOCATED WITHIN TAŞKENT NATURE PARK, OUR WILDLIFE HOSPITAL RECEIVES NEARLY 1000 ANIMAL PATIENTS, FROM AS MANY AS 160 SPECIES EACH YEAR. AFTER THE INITIAL ADMISSION, THEY RECEIVE SPECIALIZED, HIGH-QUALITY CARE TO ENSURE THEIR SAFE RETURN TO THE WILD. WE NOW PROVIDE A UNIQUE OPPORTUNITY FOR STUDENTS AND GRADUATES TO JOIN OUR TEAM AND EXPERIENCE DAILY LIFE AT OUR REMARKABLE FACILITY, ONE OF A KIND IN THE WHOLE OF CYPRUS!

WILDLIFE RESCUE AND REHABILITATION CENTER, OPERATED BY CYPRUS WILDLIFE RESEARCH INSTITUTE, IS AMONG THE FOREMOST WILDLIFE TREATMENT AND REHABILITATION CENTERS IN THE EASTERN MEDITERRANEAN REGION. OUR WORK IS ONLY ACHIEVED WITH THE SUPPORT OF OUR AMAZING VOLUNTEERS! BY APPLYING TO THIS PROGRAM, YOU WILL GET A CHANCE TO ATTEND THE TREATMENT AND REHABILITATION OF VARIOUS NATIVE, EXOTIC AND DOMESTIC SPECIES, SUCH AS REPTILES (SNAKES, TERRAPINS, TORTOISES, SEA TURTLES), BIRDS (RAPTORS, OWLS, SONGBIRDS, WADING BIRDS AND OTHERS) AND MAMMALS (DONKEYS, FOXES, HEDGEHOGS ...). YOU WILL NOT ONLY RECEIVE THEORY, BUT MORE IMPORTANTLY, PRACTICALLY LEARN HOW TO HANDLE AND RESTRAIN ANIMALS IN ORDER TO PERFORM AN EXAMINATION AND PROVIDE SPECIES-SPECIFIC ANIMAL CARE.



OUR WILDLIFE HOSPITAL VOLUNTEERS ARE INVOLVED WITH EVERY ASPECT OF WILDLIFE REHABILITATION. THEY HELP WITH THE ADMISSION, STABILIZATION, INITIAL EXAMINATION, TREATMENT, REHABILITATION, AND PHYSICAL THERAPY OF INJURED, SICK, AND ORPHANED WILDLIFE. ADDITIONALLY, THEY HELP TO ENSURE THE SMOOTH FUNCTIONING OF THE FACILITY AND HIGH STANDARDS OF ANIMAL CARE.



SPECIFIC DUTIES INCLUDE:

- ASSISTING WITH THE ASSESSMENT OF THE OVERALL HEALTH STATE OF OUR ANIMAL PATIENTS
- RESTRAINING AND HANDLING WILDLIFE FOR EXAMINATIONS AND TREATMENT
- PROVIDING SPECIALIZED TREATMENT AND THERAPY
- ANIMAL CARE (FEEDING, PROVIDING WATER, CLEANING)
- UPDATING ANIMAL CARE PROTOCOLS
- CLEANING AND SANITIZING HOSPITAL FACILITIES
- ADMINISTRATIVE TASKS, SUCH AS HELPING WITH THE INVENTORY OF PRODUCTS AND TOOLS

ANIMAL CARETAKERS FOR WILDLIFE HOSPITAL

APART FROM TAKING CARE OF INJURED, SICK AND ORPHANED NATIVE FAUNA, OUR WILDLIFE HOSPITAL CARES AND TREATS FARM ANIMALS AND EXOTIC SPECIES THAT ARE HOUSED ON OUR PREMISES. THESE ANIMALS ARE BEING FREQUENTLY BROUGHT TO OUR FACILITY DUE TO POOR WELFARE CONDITIONS OR ILLEGAL ORIGIN. OUR VOLUNTEERS HELP TO ENSURE THE BEST POSSIBLE CARE (INCLUDING GENERAL ANIMAL CARE AND SPECIALIZED MEDICAL CARE) TO ALLOW THEM TO RESTORE THEIR SPECIES-SPECIFIC BEHAVIORS AND GOOD LEVELS OF PHYSICAL AND PSYCHOLOGICAL HEALTH.



ANIMAL CARETAKERS FOR WILDLIFE HOSPITAL

ACCOMMODATION, FOOD AND TRANSPORT

OUR WILDLIFE HOSPITAL IS LOCATED WITHIN TAŞKENT NATURE PARK, WHICH IS SITUATED IN KYRENIA DISTRICT IN NORTHERN CYPRUS. OUR VOLUNTEERS ARE PROVIDED THE ACCOMMODATION AND KITCHEN FACILITIES, ALL WITHIN THE WALKING DISTANCE OF FACILITY'S CAMPUS. AFTER APPLYING TO THE PROGRAM, OUR COORDINATOR WILL HELP YOU WITH THE TRAVEL ARRANGEMENTS AND WILL DISCUSS THE POSSIBILITY OF AIRPORT TRANSFER ORGANIZED BY CWRI. PLEASE APPLY TO RECEIVE FURTHER

DETAILS.



REQUIREMENTS

- MINIMUM DURATION OF STAY: 1 MONTH
- GOOD PROFICIENCY IN ENGLISH
- EDUCATIONAL BACKGROUND IN BIOLOGY, VETERINARY, CONSERVATION, OR OTHER ANIMAL-RELATED FIELD
- RELIABILITY, TRUSTWORTHINESS, DEDICATION



TRAINING DURING THE PROJECT

OUR FACILITY AIMS FOR THE HIGHEST STANDARDS OF ANIMAL CARE. FOR THIS REASON, WE ASK OUR VOLUNTEERS AND INTERNS TO HAVE AN EDUCATIONAL BACKGROUND IN VETERINARY, BIOLOGY, CONSERVATION, OR OTHER ANIMAL-RELATED FIELDS (ZOOTECHNICS, ANIMAL SCIENCE, AND OTHERS). PREVIOUS EXPERIENCE WITH WILDLIFE IS NOT REQUIRED. OUR TEAM OF EXPERTS WILL GUIDE YOU THROUGH THE PROCEDURES AND PROVIDE YOU WITH ALL THE NECESSARY INFORMATION TO ENSURE THE MOST VALUABLE WILDLIFE VETERINARY NURSE EXPERIENCE WHILE MAKING SURE THAT ALL SAFETY AND WELFARE REQUIREMENTS OF WILDLIFE REHABILITATION ARE MET.

WHILST WE PREFER THAT APPLICANTS HAVE SOME EXPERIENCE IN THE RELEVANT FIELD, WE WELCOME ALL APPLICATIONS AND WILL REVIEW EACH EQUALLY AND FAIRLY. DO NOT LET THIS DISSUADE YOU FROM

A P P L Y I N G !

HIGHLIGHTS OF THE PROGRAMME

- GAIN VALUABLE WORK EXPERIENCE IN THE WILDLIFE HOSPITAL
- LEARN HOW TO HANDLE AND RESTRAIN WILD ANIMALS
- ASSIST WITH EMERGENCY CARE AND TREATMENT OF INJURED, SICK, AND ORPHANED WILDLIFE
- LEARN HOW TO RESTRAIN ANIMALS FOR RADIOGRAPHY
- ASSIST OUR EXPERT WILDLIFE VET AS A VET NURSE WITH SURGERIES, MEDICAL PROCEDURES, AND NECROPSIES
- LEARN HOW TO IDENTIFY HUNDREDS OF SPECIES, INCLUDING NATIVE MEDITERRANEAN FAUNA, EXOTIC AND DOMESTIC SPECIES
- JOIN EDUCATIONAL EVENTS
- LIVE IN AN AREA SURROUNDED BY NATURE AND WITH A WHOLE ISLAND VIEW
- WORK IN A MULTINATIONAL TEAM OF VOLUNTEERS



ANIMAL CARETAKERS FOR WILDLIFE HOSPITAL



COST

THERE IS NO FEE FOR THE VOLUNTEERING OPPORTUNITY ITSELF. FOOD, ACCOMMODATION, AND OTHER SERVICES ARE PROVIDED TO THE VOLUNTEERS FOR A FLAT FEE OF 20€ PER DAY (TWO MEALS PER DAY, ELECTRICITY, WATER, INTERNET, ESSENTIAL FOOD SUPPLIES, THE USE OF KITCHEN AND LAUNDRY ROOM INCL.). VOLUNTEERS ARE ALSO INVITED TO JOIN THE FIELD TRIPS, ORGANIZED BY CWRI ON THEIR DAY OFF, AT NO ADDITIONAL COST. FEES FOR THIS POSITION CAN BE COVERED BY ERASMUS+ SCHOLARSHIP.

ANIMAL CARETAKERS FOR WILDLIFE HOSPITAL

TO SUBMIT YOUR APPLICATION, PLEASE VISIT:

[HTTPS://V.CWRI.NET/PROJECTS/27](https://v.cwri.net/projects/27)

OUR TEAM WILL CONTACT YOU AND SHARE ALL THE NECESSARY INFORMATION TO ARRANGE YOUR STAY.

PLEASE CONTACT US AT [INFO@CWRI.NET](mailto:info@cwri.net) IF YOU HAVE ANY QUESTIONS OR TROUBLE WITH THE APPLICATION SYSTEM.



VOLUNTEER WITH US

VOLUNTEER SOCIAL MEDIA MANAGERS NEEDED!



WILDLIFE

RESCUE AND REHABILITATION CENTER

6

✉ INFO@CWRI.NET

 WWW.CWRI.NET

CYPRUS WILDLIFE RESEARCH INSTITUTE IS A NON-PROFIT ORGANIZATION FOCUSING ON THE PROTECTION OF THE NATURE OF CYPRUS. LOCATED WITHIN TAŞKENT NATURE PARK, OUR WILDLIFE RESCUE AND REHABILITATION CENTER PROVIDES SPECIALIZED CARE FOR MORE THAN 1000 ANIMAL PATIENTS FROM MORE THAN 160 SPECIES EVERY YEAR. APART FROM INJURED NATIVE FAUNA AND DOMESTIC ANIMALS, EXOTIC SPECIES CONFISCATED FROM ILLEGAL TRADE ARE BEING HOUSED AND TAKEN CARE OF AT THIS FACILITY. WE NOW OFFER A NEW POSITION FOR VOLUNTEERS TO JOIN OUR TEAM AND DEVELOP THEIR SKILLS IN SOCIAL MEDIA CONTENT CREATION, SOCIAL MEDIA MANAGEMENT, PHOTOGRAPHY, AND VIDEO P R O D U C T I O N .



CONTENT CREATORS FOR WILDLIFE RESCUE CENTER



PROJECT DESCRIPTION

AS A VOLUNTEER, YOU WILL HAVE A CHANCE TO WITNESS, DOCUMENT, AND PUBLISH THE STORY OF ANIMALS THAT ARE BEING TREATED AT OUR FACILITY, DUE TO BEING SICK, INJURED, ORPHANED, MISTREATED, OR ILLEGALLY TRAFFICKED. APART FROM CAPTURING THE DAILY LIFE IN WILDLIFE HOSPITAL AND RESCUE AND REHABILITATION CENTER, YOU WILL ATTEND ANIMAL RESCUES AND RELEASES, TO CREATE A VISUAL NARRATIVE OF THE JOURNEY OF OUR ANIMAL PATIENTS.

CONTENT CREATORS FOR WILDLIFE RESCUE CENTER



SPECIFIC DUTIES INCLUDE:

- CREATE AND EDIT PHOTO/VIDEO CONTENT CAPTURING DAILY LIFE IN WILDLIFE HOSPITAL AND RESCUE AND REHABILITATION CENTER
- ATTEND AND DOCUMENT ANIMAL RESCUES AND RELEASES
- POST AND SCHEDULE CREATIVE CONTENT (TEXT, PHOTO/VIDEO, NEWS) ON OUR SOCIAL MEDIA CHANNELS
- KEEP OUR ONLINE COMMUNITY ACTIVE; COMMUNICATE AND INTERACT WITH OUR FOLLOWERS AND SUPPORTERS
- ANALYZE METRICS AND BUILD STRATEGIES TO INCREASE THE ONLINE PRESENCE AND ENGAGEMENT OF CWRI
- MANAGE IMAGE DATABASE AND ENTER NEW DATA

TRAINING DURING THE PROJECT

YOU WILL BE TRAINED BY OUR TEAM TO UNDERSTAND THE CONCEPT AND IMPORTANCE OF CWRI'S MISSION, GOALS, AND IMPACT, AS WELL AS HOW TO USE VARIOUS TACTICS FOR OPTIMIZING SOCIAL MEDIA POSTS AND PROFILES TO REACH THEIR MAXIMUM POTENTIAL. WHILST WE PREFER THAT APPLICANTS HAVE SOME EXPERIENCE IN THE RELEVANT FIELD, WE WELCOME ALL APPLICATIONS AND WILL REVIEW EACH EQUALLY AND FAIRLY. DO NOT LET THIS DISSUADE YOU FROM

A P P L Y I N G !



ACCOMMODATION, FOOD AND TRANSPORT

THE CAMPUS OF CWRI IS LOCATED WITHIN TAŞKENT NATURE PARK, WHICH IS SITUATED IN KYRENIA DISTRICT IN NORTHERN CYPRUS. OUR VOLUNTEERS ARE PROVIDED THE ACCOMMODATION AND KITCHEN FACILITIES, ALL WITHIN THE WALKING DISTANCE OF THE FACILITY'S CAMPUS. AFTER APPLYING TO THE PROGRAM, OUR COORDINATOR WILL HELP YOU WITH THE TRAVEL ARRANGEMENTS AND DISCUSS THE POSSIBILITY OF AIRPORT TRANSFER ORGANIZED BY CWRI. PLEASE APPLY TO RECEIVE FURTHER DETAILS.

CONTENT CREATORS FOR WILDLIFE RESCUE CENTER

REQUIREMENTS

- MINIMUM DURATION OF STAY: 1 MONTH
- VOLUNTEERS ARE REQUIRED TO BRING THEIR OWN LAPTOPS AND EQUIPMENT FOR PHOTO/VIDEO RECORDING AND EDITING
- ADVANCED LEVEL OF ENGLISH LANGUAGE
- EXPERIENCE WITH CONTENT PRODUCTION, TOOL USE, AND MANAGEMENT OF SOCIAL MEDIA PLATFORMS
- UNDERSTANDING CURRENT TRENDS IN SOCIAL MEDIA MARKETING
- STRONG COMMUNICATION SKILLS AND ABILITY TO COMMUNICATE VIEWPOINTS CREATIVELY
- CREATIVITY AND ATTENTION TO DETAIL



CONTENT CREATORS FOR WILDLIFE RESCUE CENTER



COST

THERE IS NO FEE FOR THE VOLUNTEERING OPPORTUNITY ITSELF. FOOD, ACCOMMODATION, AND OTHER SERVICES ARE PROVIDED TO THE VOLUNTEERS FOR A FLAT FEE OF 20€ PER DAY (TWO MEALS PER DAY, ELECTRICITY, WATER, INTERNET, ESSENTIAL FOOD SUPPLIES, THE USE OF KITCHEN AND LAUNDRY ROOM INCL.). VOLUNTEERS ARE ALSO INVITED TO JOIN THE FIELD TRIPS, ORGANIZED BY CWRI ON THEIR DAY OFF, AT NO ADDITIONAL COST. FEES FOR THIS POSITION CAN BE COVERED BY THE ERASMUS+ SCHOLARSHIP.

HIGHLIGHTS OF THE PROGRAMME

- GAIN VALUABLE WORK EXPERIENCE TO KICKSTART YOUR SOCIAL MEDIA CAREER
- LEARN HOW TO MANAGE YOUR OWN SCHEDULE TO MEET THE DEADLINES SET BY THE PROJECT COORDINATOR
- WITNESS THE FASCINATING PROCESS OF A WILDLIFE RESCUE MISSION, WILDLIFE REHABILITATION, AND RELEASE
- WORK IN A MULTINATIONAL TEAM OF VOLUNTEERS
- EXPERIENCE DAILY LIFE IN A REMARKABLE FACILITY, ONE OF A KIND IN THE WHOLE OF CYPRUS
- LIVE IN AN AREA SURROUNDED BY NATURE AND WITH A WHOLE ISLAND VIEW
- JOIN EDUCATIONAL EVENTS
- LEARN ABOUT MEDITERRANEAN FAUNA, EXOTIC AND DOMESTIC SPECIES



CONTENT CREATORS FOR WILDLIFE RESCUE CENTER

WILDLIFE HOSPITAL

TO SUBMIT YOUR APPLICATION, PLEASE VISIT:

[HTTPS://V.CWRI.NET/PROJECTS/31](https://v.cwri.net/projects/31)

OUR TEAM WILL CONTACT YOU AND SHARE ALL THE NECESSARY INFORMATION TO ARRANGE YOUR STAY.

PLEASE CONTACT US AT [INFO@CWRI.NET](mailto:info@cwri.net) IF YOU HAVE ANY QUESTIONS OR TROUBLE WITH THE APPLICATION SYSTEM.



7



NORTH
C Y P R U S

 INFO@CWRI.NET

ARTHROPOD FIELD STUDY

VOLUNTEERS NEEDED!

CYPRUS WILDLIFE RESEARCH INSTITUTE WAS ESTABLISHED IN 2018 AS AN UMBRELLA ORGANIZATION FOCUSING ON THE PROTECTION OF THE WELL-BEING OF NATURE AND WILDLIFE OF CYPRUS, AND THE WIDER LEVANTINE BASIN. RESEARCH CONDUCTED UNDER CWRI HELPS TO FILL THE DATA GAPS ON THE BIODIVERSITY OF THE CYPRIOT REGION, CONSTITUTING A PARAMOUNT ACTIVITY OF NATURE CONSERVATION. APART FROM IMPROVING THE LEVEL OF KNOWLEDGE OF LOCAL RARE, CRYPTIC, AND ENDEMIC SPECIES, IT ENABLES EFFECTIVE MONITORING OF HABITATS AT THE LANDSCAPE LEVEL, AND THE DEVELOPMENT OF CONSERVATION STRATEGIES ENSURING SUSTAINABLE ECOSYSTEMS.



ARTHROPOD RESEARCH ASSISTANT



PROJECT DESCRIPTION

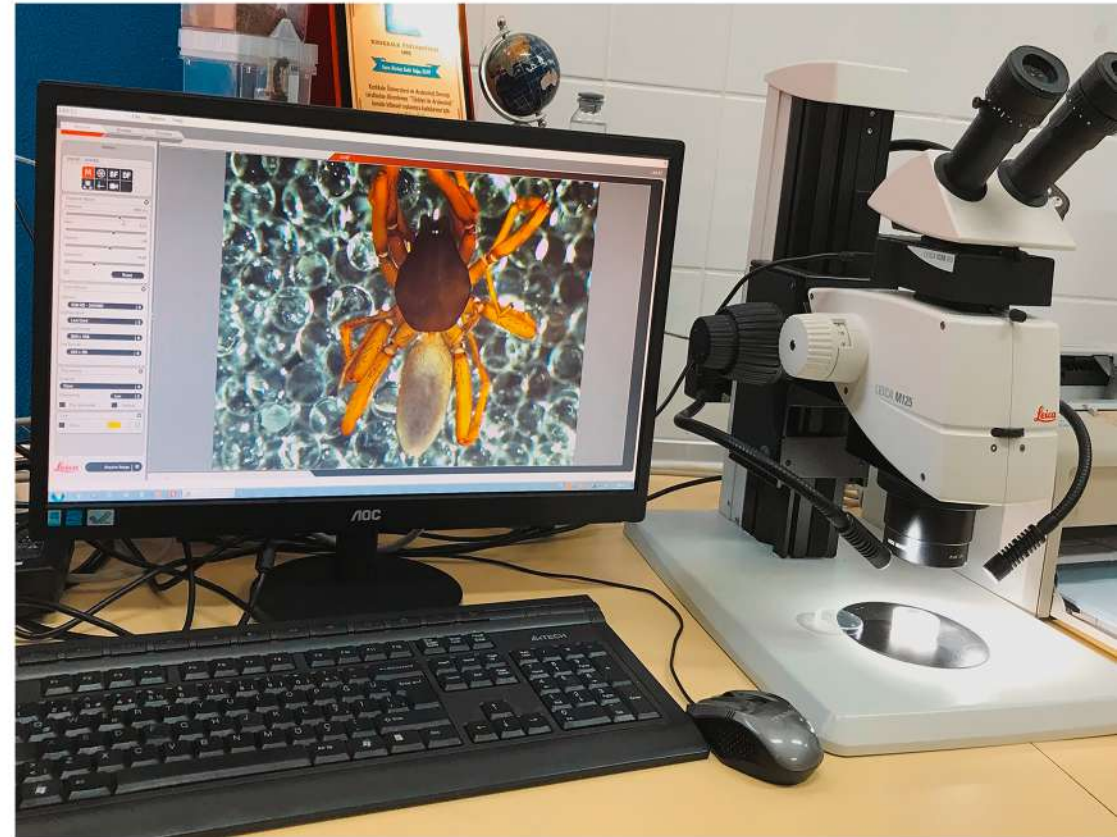
ARTHROPODS, AND ITS LARGEST AND MOST VARIED GROUP, INSECTS, ARE AMONGST THE MOST SUCCESSFUL AND DIVERSE GROUPS OF ANIMALS ON EARTH. DESPITE BEING BOTH HIGHLY ABUNDANT AND INTEGRAL FOR THE FUNCTIONING OF MOST ECOSYSTEMS, OUR KNOWLEDGE, AND UNDERSTANDING OF ARTHROPODS, ARE STILL LARGELY LIMITED AND IGNORED IN MOST PARTS OF THE WORLD. IN THIS SENSE, FIELD STUDIES ARE THE MOST FUNDAMENTAL AND ESSENTIAL WAYS TO IMPROVE THE STATE OF KNOWLEDGE OF ARTHROPODS, AND FILL THE GAPS REGARDING ARTHROPOD'S GENERAL BIOLOGY, ECOLOGY, AND INCREASINGLY IMPORTANT CONSERVATION.

ARTHROPOD RESEARCH ASSISTANT



SPECIFIC DUTIES INCLUDE:

- ATTEND ZOOLOGICAL LESSONS TO DEVELOP THEORETICAL KNOWLEDGE ON BIOLOGY, EVOLUTION, TAXONOMY, AND INTERRELATIONSHIPS OF ARTHROPODS
- LEARN AND PRACTICE SAMPLING METHODS APPLIED IN DIVERSE NATURAL AND ARTIFICIAL HABITATS
- PRACTICE THE IDENTIFICATION OF ARTHROPOD TAXA IN THE FIELD AND IN THE LABORATORY
- SEPARATE, DISSECT, ANALYZE AND PRESERVE COLLECTED SAMPLES IN A LABORATORY
- ANALYZE THE DATA AND WRITE SHORT REPORTS SUMMARIZING YOUR FINDINGS
- LEARN ABOUT EXPERIMENTAL RESEARCH DESIGN
- FIND OUT ABOUT THE FUTURE RESEARCH OPPORTUNITIES AND POSSIBILITIES OF COLLABORATION WITH CWRI
- CONTRIBUTE TO THE KNOWLEDGE OF THE BIODIVERSITY OF CYPRUS



OUR INSTITUTE NOW OFFERS A UNIQUE OPPORTUNITY FOR VOLUNTEERS TO JOIN OUR EXPERT ARACHNOLOGIST ON FIELD STUDIES TO COLLECT VALUABLE SCIENTIFIC DATA ON LOCAL TERRESTRIAL ARTHROPODS FROM DIFFERENT HABITATS ACROSS NORTHERN CYPRUS.

TRAINING DURING THE PROJECT

AS A VOLUNTEER APPLYING TO THIS PROGRAM, YOU WILL ATTEND WEEKLY ZOOLOGICAL LESSONS LED BY OUR EXPERT ARACHNOLOGIST, TO DEVELOP YOUR KNOWLEDGE OF ARTHROPOD BIOLOGY, ZOOGEOGRAPHY, EVOLUTION, ECOLOGY, AND TAXONOMY. YOU WILL BE GUIDED TO LEARN AND PRACTICE HOW TO SET UP TRAPS FOR ARTHROPODS COLLECTION, HOW TO PROPERLY DISSECT AND PRESERVE COLLECTED SPECIMENS AND HOW TO OPERATE A STEREOSCOPIC MICROSCOPE. PREVIOUS KNOWLEDGE OF ARTHROPOD TAXONOMY IS NOT CONSIDERED A PREREQUISITE FOR BEING ACCEPTED TO THE PROGRAM. OUR PROGRAMS ARE DESIGNED TO COVER BOTH THEORETICAL KNOWLEDGE AND PRACTICAL FIELD SKILLS TO ENSURE THE MOST VALUABLE WORK EXPERIENCE FOR ALL YOUNG ARTHROPOD ENTHUSIASTS!



ACCOMMODATION, FOOD AND TRANSPORT

OUR VOLUNTEERS ARE HOUSED IN BUNGALOWS, LOCATED WITHIN TAŞKENT NATURE PARK, WHICH IS SITUATED IN KYRENIA DISTRICT IN NORTHERN CYPRUS. AS A VOLUNTEER, YOU WILL BE PROVIDED THE ACCOMMODATION AND KITCHEN FACILITIES, ALL WITHIN THE WALKING DISTANCE OF THE MAIN CAMPUS OF CYPRUS WILDLIFE RESEARCH INSTITUTE. AFTER APPLYING TO THE PROGRAM, OUR COORDINATOR WILL HELP YOU WITH THE TRAVEL ARRANGEMENTS AND WILL DISCUSS THE POSSIBILITY OF AIRPORT TRANSFER ORGANIZED BY CWRI. PLEASE APPLY TO RECEIVE FURTHER DETAILS.

ARTHROPOD RESEARCH ASSISTANT

REQUIREMENTS

- MINIMUM DURATION OF STAY: 1 MONTH
- ADVANCED LEVEL OF ENGLISH LANGUAGE
- BASIC OUTDOOR TRAINING
- NO MEDICAL CONDITIONS OR DISABILITIES THAT PREVENT WORKING IN DIFFICULT FIELD CONDITIONS
- NO ALLERGIES TO ARTHROPOD BITES AND STINGS
- NOT BEING AFRAID OF ENCLOSED AND/OR TIGHT-FITTING SPACE THE DARK AND ARTHROPODS
- DRIVER'S LICENCE



ARTHROPOD RESEARCH ASSISTANT



COST

THERE IS NO FEE FOR THE VOLUNTEERING OPPORTUNITY ITSELF. FOOD, ACCOMMODATION, AND OTHER SERVICES ARE PROVIDED TO THE VOLUNTEERS FOR A FLAT FEE OF 20€ PER DAY (TWO MEALS PER DAY, ELECTRICITY, WATER, INTERNET, ESSENTIAL FOOD SUPPLIES, THE USE OF KITCHEN AND LAUNDRY ROOM INCL.). VOLUNTEERS ARE ALSO INVITED TO JOIN THE FIELD TRIPS, ORGANIZED BY CWRI ON THEIR DAY OFF, AT NO ADDITIONAL COST. FEES FOR THIS POSITION CAN BE COVERED BY ERASMUS+ SCHOLARSHIP.

HIGHLIGHTS OF THE PROGRAMME

- LEARN ABOUT THE BIOLOGY, DIVERSITY AND EVOLUTION OF ARTHROPODS
- EXPLORE AND LEARN ABOUT THE RELEVANCE OF ARTHROPODS IN THE FIELDS OF ECOLOGY, BIOMEDICINE AND BIOMATERIALS
- LEARN TO IDENTIFY ARTHROPOD TAXA IN THE FIELD AND LABORATORY
- MASTER THE CORRECT APPLICATION OF SAMPLING METHODS IN DIFFERENT HABITATS (F.EX. ARID, SEMI-ARID, PINE FORESTS, CAVES, ETC.)
- GET FAMILIAR WITH THE LAB ENVIRONMENT, A NECESSARY COMPONENT OF MANY LIFE SCIENCE DISCIPLINES
- DEVELOP AND DEEPEN YOUR STEREO MICROSCOPY SKILLS
- LEARN THE METHOD OF SCORPION VENOM MILKING
- GAIN VALUABLE WORK EXPERIENCE TO PREPARE YOU FOR A CAREER IN ENTOMOLOGY, ARACHNOLOGY AND CONSERVATION





ARTHROPOD RESEARCH ASSISTANT

TO SUBMIT YOUR APPLICATION, PLEASE VISIT:

[HTTPS://V.CWRI.NET/PROJECTS/36](https://v.cwri.net/projects/36)

OUR TEAM WILL CONTACT YOU AND SHARE ALL THE NECESSARY INFORMATION TO ARRANGE YOUR STAY.

PLEASE CONTACT US AT [INFO@CWRI.NET](mailto:info@cwri.net) IF YOU HAVE ANY QUESTIONS OR TROUBLE WITH THE APPLICATION SYSTEM.



8



NORTH C Y P R U S

VOLUNTEER AND HIKE
IN CYPRUS!



TRAIL MAINTENANCE TEAM



PROJECT DESCRIPTION

AS A VOLUNTEER, YOU WILL HAVE A CHANCE TO BE OUT IN NATURE ALL DAY WITH YOUR TEAM, BE PHYSICALLY ACTIVE, AND WORK IN SOME OF THE MOST BEAUTIFUL NATURAL AREAS IN THE MOUNTAINS AND COASTLINE. THE TRAILS TO BE MAINTAINED ARE DISTRIBUTED FROM THE VERY WEST TO THE VERY EASTERN TIP OF THE ISLAND. UNDER THE SUPERVISION OF THE TRAIL EXPERT, THE TRAIL MAINTENANCE TEAM PLANS THE LOGISTICS OF FIELDWORK, EXECUTES THE REQUIRED WORK IN THE FIELD, AND PRESENTS THE WORK IN WRITTEN

FORM.

HIKING TRAILS ARE AN ESSENTIAL PART OF THE INFRASTRUCTURE IN PROTECTED / NATURAL AREAS. TRAILS ALLOW PEOPLE TO EXPLORE NATURE WITH MINIMAL IMPACT, DIVERT PEOPLE AWAY FROM SENSITIVE HABITATS TOWARDS LESS SENSITIVE AND MORE AESTHETIC LANDSCAPES, AND OFFER AN OPPORTUNITY FOR BOTH LOCALS AND FOREIGN VISITORS TO IMMERSE THEMSELVES IN NATURE AND GET IN TOUCH WITH WILDLIFE. IT IS AN IMPORTANT TOOL FOR LEARNING ABOUT NATURE, PROTECTED SPECIES, AND HABITATS. THE HIKING TRAILS IN THE NORTHERN PART OF CYPRUS ARE OFFICIALLY DESIGNATED BY THE MINISTRY OF TOURISM AND ENVIRONMENT AND WHILE BEING MAINTAINED BY TASKENT NATURE

P A R K .
WE NOW OFFER A NEW POSITION FOR VOLUNTEERS TO JOIN OUR "TRAIL MAINTENANCE TEAM" AND DEVELOP THEIR SKILLS IN PROTECTED AREA VISITOR MANAGEMENT, MAPPING AND QUANTIFYING FIELDWORK, THE IDENTIFICATION OF RARE, ENDEMIC, AND NATIVE VEGETATION, THE LOGISTICAL PLANNING OF FIELDWORK IN REMOTE AREAS AND THE PHYSICAL LABOR WITH HAND TOOLS.



TRAIL MAINTENANCE TEAM



SPECIFIC DUTIES INCLUDE:

- LOGISTICAL PLANNING OF MATERIALS AND EQUIPMENT FOR FIELDWORK
- IDENTIFYING, MAPPING, AND QUANTIFYING MAINTENANCE WORKS
- RAKING THE FOOTPATH, WEEDING, PRUNING OVERGROWN BUSHES
- EXCAVATING THE SOIL WITH HAND TOOLS
- REPAINTING THE FADED TRAIL PAINT MARKS USING STENCILS
- HELPING WITH BUILDING WOODEN AND STONE STEPS
- EDGING THE PATH WITH ROCKS
- KEEPING WRITTEN / PHOTOGRAPHIC RECORDS OF THE WORK

TRAINING DURING THE PROJECT

YOU WILL BE TRAINED BY OUR TEAM TO UNDERSTAND THE CONCEPT AND IMPORTANCE OF CWRI'S MISSION, GOALS, AND IMPACT, AS WELL AS HOW TO DO ALL THE WORK IN THE MAINTENANCE OF THE HIKING TRAILS. WHILST WE PREFER THAT APPLICANTS HAVE SOME EXPERIENCE IN PHYSICAL LABOR, USING HAND TOOLS, AND SPENDING AN ENTIRE DAY IN NATURE, WE WELCOME ALL APPLICATIONS AND WILL REVIEW EACH EQUALLY AND FAIRLY.



ACCOMMODATION, FOOD AND TRANSPORT

VOLUNTEERS FROM THIS PROGRAM ARE PROVIDED ACCOMMODATION AND KITCHEN FACILITIES LOCATED IN THE TASKENT NATURE PARK. AFTER APPLYING TO THE PROGRAM, OUR COORDINATOR WILL HELP YOU WITH THE TRAVEL ARRANGEMENTS AND DISCUSS THE POSSIBILITY OF AIRPORT TRANSFER ORGANIZED BY THE CYPRUS WILDLIFE RESEARCH INSTITUTE. PLEASE APPLY TO RECEIVE FURTHER DETAILS.

TRAIL MAINTENANCE TEAM

REQUIREMENTS

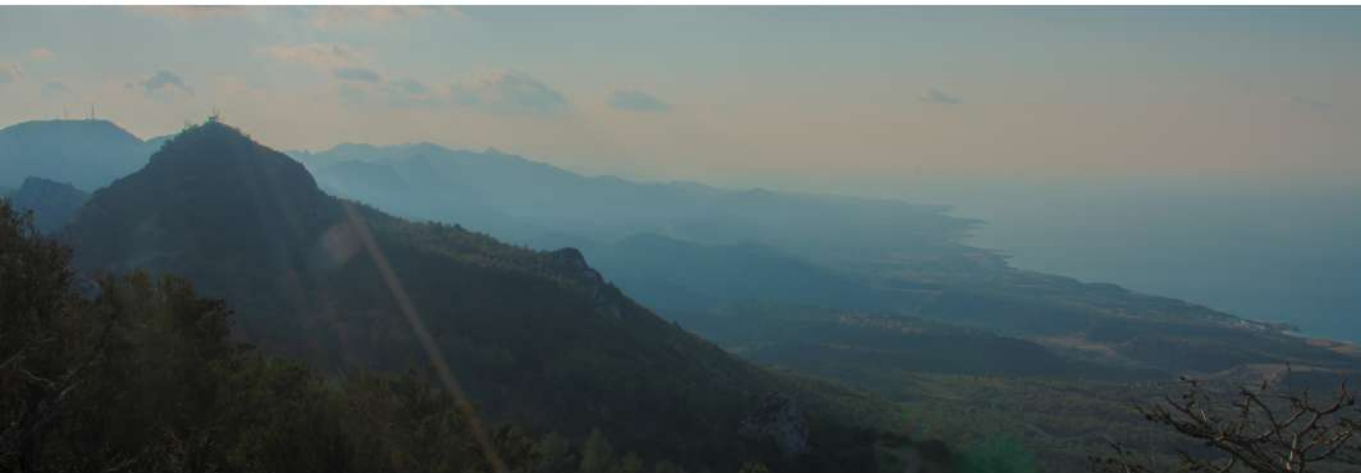
- MINIMUM DURATION OF STAY: 1 MONTH
- INTERMEDIATE LEVEL OF ENGLISH LANGUAGE
- ABILITY TO WALK A MINIMUM OF 12 KM PER DAY IN NATURAL TERRAIN
- EXPERIENCE WITH USING HAND TOOLS, NAVIGATION AND GOOGLE MAPS APP ON A SMARTPHONE
- OUTDOOR GEAR
- ABILITY TO CARRY OWN FOOD AND WATER SUPPLIES AND ONE HAND TOOL
- ABILITY TO WORK IN A TEAM
- ABILITY TO FOLLOW INSTRUCTIONS
- DRIVERS LICENSE VALID IN NORTHERN CYPRUS IS A PLUS



TRAIL MAINTENANCE TEAM

HIGHLIGHTS OF THE PROGRAMME

- WORK IN A MULTINATIONAL TEAM OF VOLUNTEERS
- LIVE IN AN AREA SURROUNDED BY NATURE AND WITH A VIEW OF THE MOUNTAINS
- WORK IN REMOTE NATURAL AREAS WITH BEAUTIFUL VIEWS OF FORESTS, MOUNTAINS, AND SEASIDE
- ENJOY OUTDOORS ALL DAY LONG
- LEARN ABOUT MEDITERRANEAN FAUNA, FLORA, AND GEOGRAPHY
- GAIN VALUABLE FIELDWORK EXPERIENCE
- LEARN ABOUT DAILY LIFE IN TASKENT NATURE PARK'S WILDLIFE RESCUE AND REHABILITATION CENTER



COST

THERE IS NO FEE FOR THE VOLUNTEERING OPPORTUNITY ITSELF. FOOD, ACCOMMODATION, AND OTHER SERVICES ARE PROVIDED TO THE VOLUNTEERS FOR A FLAT FEE OF 20€ PER DAY (TWO MEALS PER DAY, ELECTRICITY, WATER, INTERNET, ESSENTIAL FOOD SUPPLIES, THE USE OF KITCHEN AND LAUNDRY ROOM INCL.). VOLUNTEERS ARE ALSO INVITED TO JOIN THE FIELD TRIPS, ORGANIZED BY CWRI ON THEIR DAY OFF, AT NO ADDITIONAL COST. FEES FOR THIS POSITION CAN BE COVERED BY ERASMUS+ SCHOLARSHIP.

AVAILABLE DATES

THIS VOLUNTEERING OPPORTUNITY ACCEPTS VOLUNTEERS FOR THREE DIFFERENT SESSIONS:

- 15. APRIL 2023 – 15. MAY 2023 (30 DAYS)
- 07. SEPTEMBER 2023 – 07. OCTOBER 2023 (30 DAYS)
- 15. OCTOBER 2023 – 30. NOVEMBER 2023 (45 DAYS)

VOLUNTEERS MUST ATTEND THE ENTIRE SESSION PERIOD.





TRAIL MAINTENANCE TEAM

TO SUBMIT YOUR APPLICATION, PLEASE VISIT:

[HTTPS://V.CWRI.NET/PROJECTS/39](https://v.cwri.net/projects/39)

OUR TEAM WILL CONTACT YOU AND SHARE ALL THE NECESSARY INFORMATION TO ARRANGE YOUR STAY.


PLEASE CONTACT US AT [INFO@CWRI.NET](mailto:info@cwri.net) IF YOU HAVE ANY QUESTIONS OR TROUBLE WITH THE APPLICATION SYSTEM.



FOLLOW US!

WWW.CWRI.NET 

WWW.FB.COM/CYPRUSWILDLIFE 

WWW.FB.COM/TASKENTDOGAPARKI 

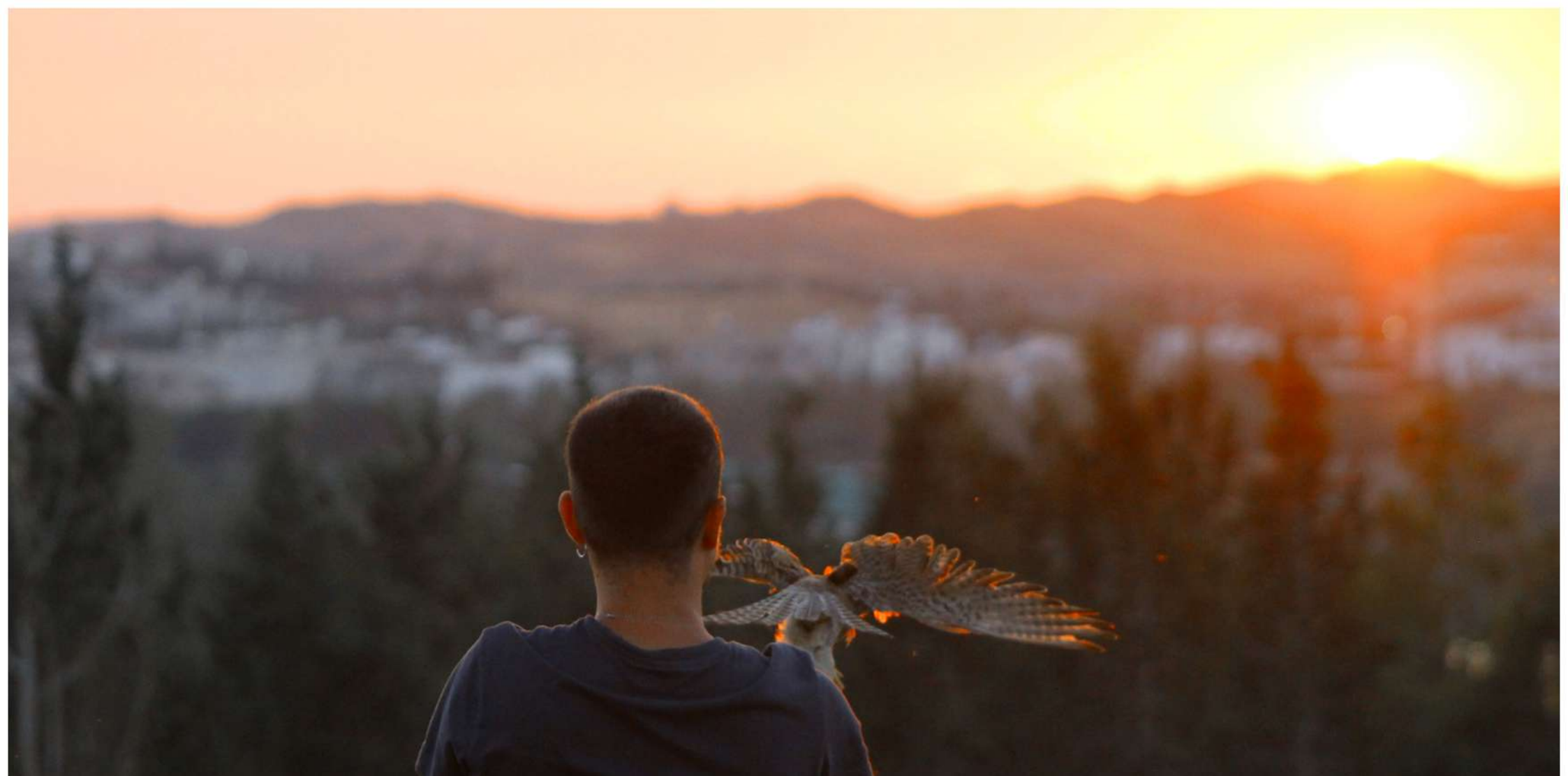
WWW.FB.COM/MARINELIFECENTER 

WWW.INSTAGRAM.COM/CYPRUSWILDLIFE 

WWW.INSTAGRAM.COM/DOGAPARKI 

WWW.INSTAGRAM.COM/CYPRUSMARINELIFE 

WWW.YOUTUBE.COM/@CYPRUSWILDLIFE 



**JOIN OUR TEAM
TODAY!**

CYPRUS WILDLIFE - KIBRIS YABAN HAYATI - ΑΤΡΙΑ ΦΥΣΗ ΤΗΣ ΚΥΠΡΟΥ

